



## Bathing establishment Fact Sheet

Bathhouse name	La Rina
Address	Viale Della Vittoria, 38
City	Marina di Cecina
Contacts	+39 0586 620018
Website	Not detected

**TESTED BY:** [Handy Superabile - Social Promotion Association](#) in summer 2023

**Please note** The following information refers to the verification date shown at the bottom of each card. **The Association** is not responsible for any significant changes made by the property after the visit.

### Summary

Bathing establishment Fact Sheet.....	1
Arrival at the facility .....	2
Private/public parking.....	2
Pathway from the parking lot to the main entrance .....	2
Reception.....	3
Bar/restaurant .....	4
Internal Pathways and common services.....	5
Internal Pathways.....	5
Toilet and shower accessible to guests with reduced mobility.....	6
Changing room.....	8
Beach.....	9
Children's play area.....	11
Swimming pool.....	11
Doctors' Offices/Healthcare Facilities.....	11



Project carried out with the contribution of the





## Arrival at the facility

### Private/public parking

Presence of private parking	NO
Public parking nearby	YES
Type of public car park	asphalt
	

### Pathway from the parking lot to the main entrance

Pathway from the parking lot to the main entrance	through 2 ramps: the first one is 200 cm long, 91 cm wide and 2.3% slope; second length 92 cm, width 178 cm, slope 6.1%; step 4 cm
Path from the parking lot to the secondary entrance	by ramp: length 210 cm, width 114 cm, slope 3.3%; step 4 cm
There are markers and tactile maps	On the pedestrian avenue there is a loges system
Usable door/entrance width	greater than 90 cm for both entrances





## Reception

Umbrella booking system	<input type="checkbox"/> Via web <input checked="" type="checkbox"/> By phone or email <input checked="" type="checkbox"/> On-site
Presence of multilingual staff	YES
Presence of plant plan with key to services available	YES

Project carried out with the contribution of the





Presence of visuo-tactile map	NO
Bulletin board/information panels at an average height of 130 cm in a well-lit area and font size at least 14 dpi with a contrast ratio greater than 4.5:1	NO
The staff attended training courses on welcoming people with different disabilities	YES

### Bar/restaurant

Type of venue	Bar/restaurant
Access to the premises	via 2 ramps: the first length 200 cm, width 91 cm, gradient 3.3%; second length 92 cm, width 178 cm, gradient 6.1%
Usable door/entrance width	more than 90 cm
Bar counter	115 cm
Types of tables	4- legged and with central support
Space underneath the tables from the floor	more than 65 cm
Multilingual menu	YES
Menus with large print fonts	NO
Braille menu	NO
Table service for people with disabilities	YES
Availability of gluten-free food	<input checked="" type="checkbox"/> bread <input type="checkbox"/> pasta <input type="checkbox"/> biscuits <input checked="" type="checkbox"/> ice cream <input type="checkbox"/> Pre-packaged foods



Project promoted by



Regione Toscana



## Internal Pathways and common services

### Internal Pathways

Indicate whether the pathways connecting the entrance to the beach are flat or with ramps in addition to those already described

Obstacle-free paths




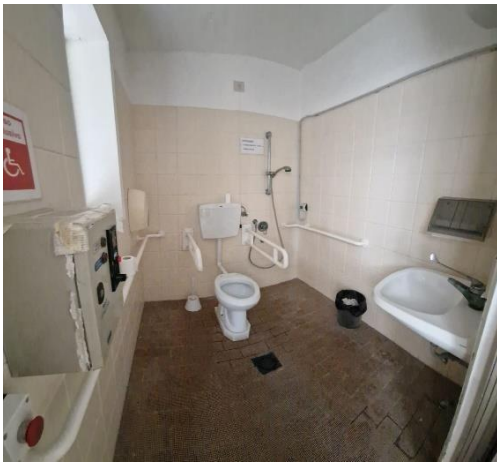
Project carried out with the contribution of the



Presidenza del  
Consiglio dei Ministri  
Ministro per la disabilità





**Toilet and shower accessible to guests with reduced mobility**

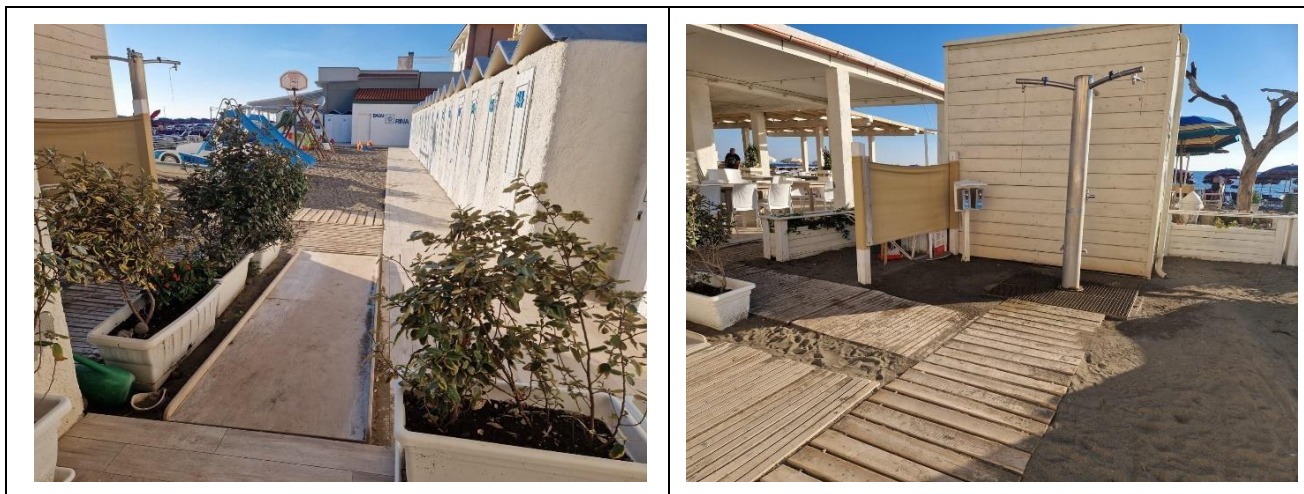
Number <b>of toilets</b> accessible/usable by guests with reduced mobility	1
Access to the premises	with a step of 4 cm
Usable width of the entrance door	more than 90 cm
Toilet height	50 cm
Open front toilet seat	NO
Support handles	on both sides
Flexible hand shower at the side of the toilet	YES
Free space on the sides of the toilet	left more than 90 cm right 65 cm frontal more than 90 cm
Electric doorbell/phone	YES
Washbasin with space underneath for wheelchair	66 cm
Height from the ground on the bottom edge of the mirror	128 cm
Baby changing table	NO
	
Accessible <b>shower</b> available for guests with reduced mobility	YES in common with the toilet room





Useful width of the door/entrance gate if separated from the toilet room	more than 90 cm
Shower type	open-type
Floor-level shower	Choose an item.
Shower chair	missing
Grab bar	YES
Presence of shower head or ups and downs	Choose an item.
Electric doorbell/phone	YES
	
Outdoor <b>shower</b> available accessible to guests with reduced mobility	Yes outdoor without canopy
Access to the shower room if separated from the toilet room	by ramp length 300 cm, width 86 cm, slope 2.6%
Shower type	open-type
Floor-level shower	YES
Shower chair	missing
Presence of shower head or ups and downs	fixed shower head





**Changing room**

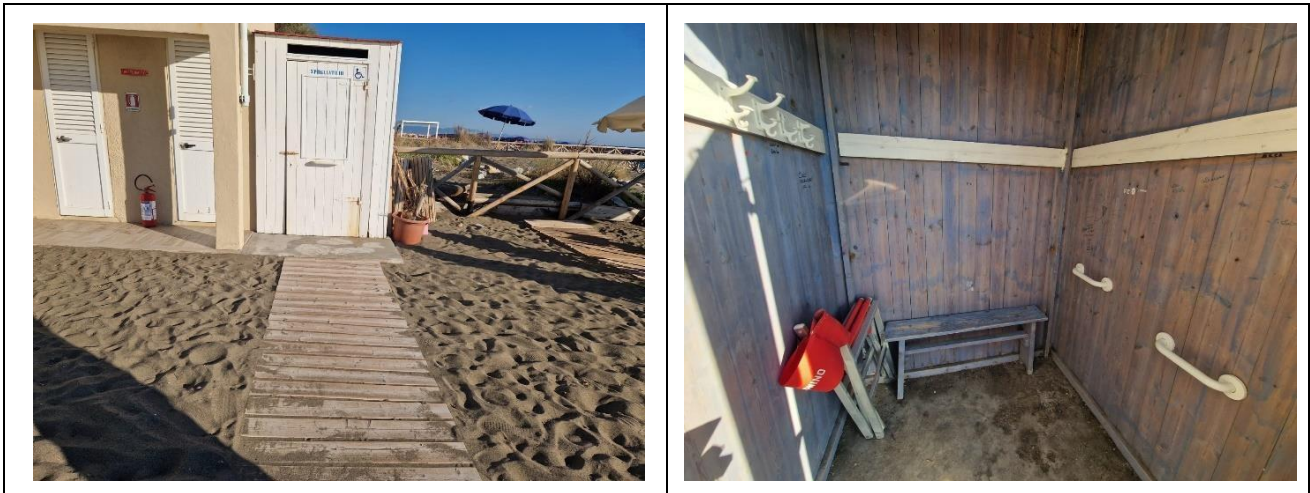
Accessible changing room available for guests with reduced mobility	YES
Access to the premises	via 2 ramps: the first length 133 cm, width 146 cm, slope 4.5%; second length 100 cm, width 267 cm, slope 4.8%; 2 cm step
Usable door/entrance width	more than 90 cm
Size of the dressing room	width 158 cm and depth 159 cm
Presence of a cot	NO
Coat rack height from the ground	over 140 cm



Project promoted by

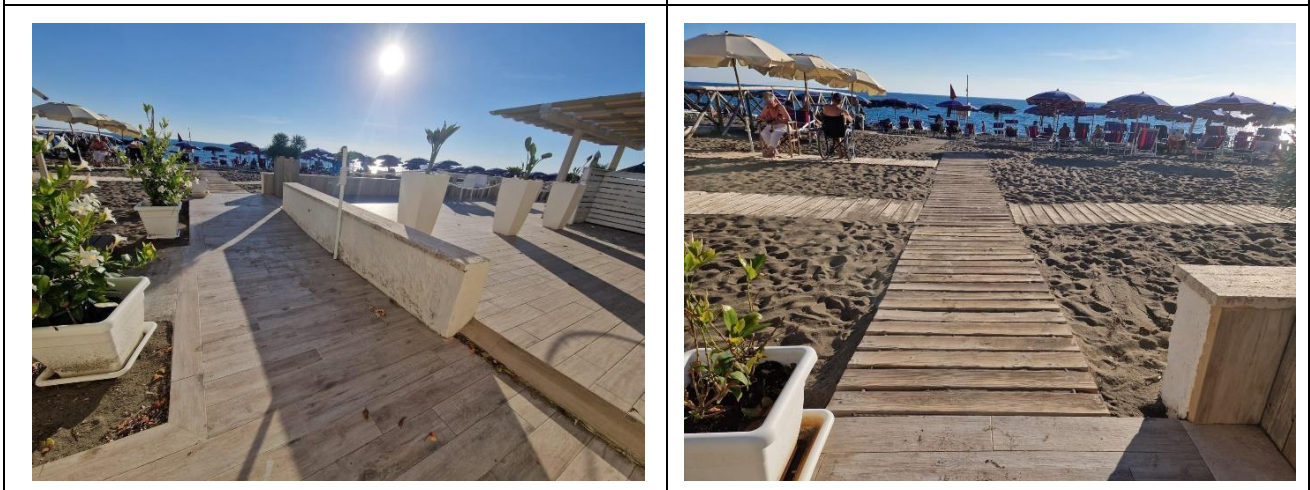


Regione Toscana



## Beach

Type of beach	sand
Access to the beach	Flat
Walkway to reach the umbrellas	YES
Type of walkway	wood
Walkway width	100 cm



Project carried out with the contribution of the



Presidenza del  
Consiglio dei Ministri  
Ministro per la disabilità



	
<p>Removable Platform between the walkway and the umbrella station to facilitate the passage and parking wheelchair</p>	<p>YES</p>
<p>Amphibious beach chair available for helping people with reduced mobility to enjoy swimming (owned by the establishment or by association)</p>	<p>YES</p>
	





### Children's play area

Children's play area	inaccessible to children with reduced mobility due to sandy bottom
There are games for children with reduced mobility	NO
	

### Swimming pool

The property has a swimming pool	NO
----------------------------------	----

### Doctors' Offices/Healthcare Facilities

Hospitals near the facility	Cecina Hospital at 4.9 km; Via Montanara, Cecina
Other Healthcare Facilities	Tourist Medical Guard at 250 m; Viale Galliano, Marina di Cecina

TESTED BY: **Handy Superabile Social Promotion Association in summer 2023**

Project carried out with the contribution of the

